

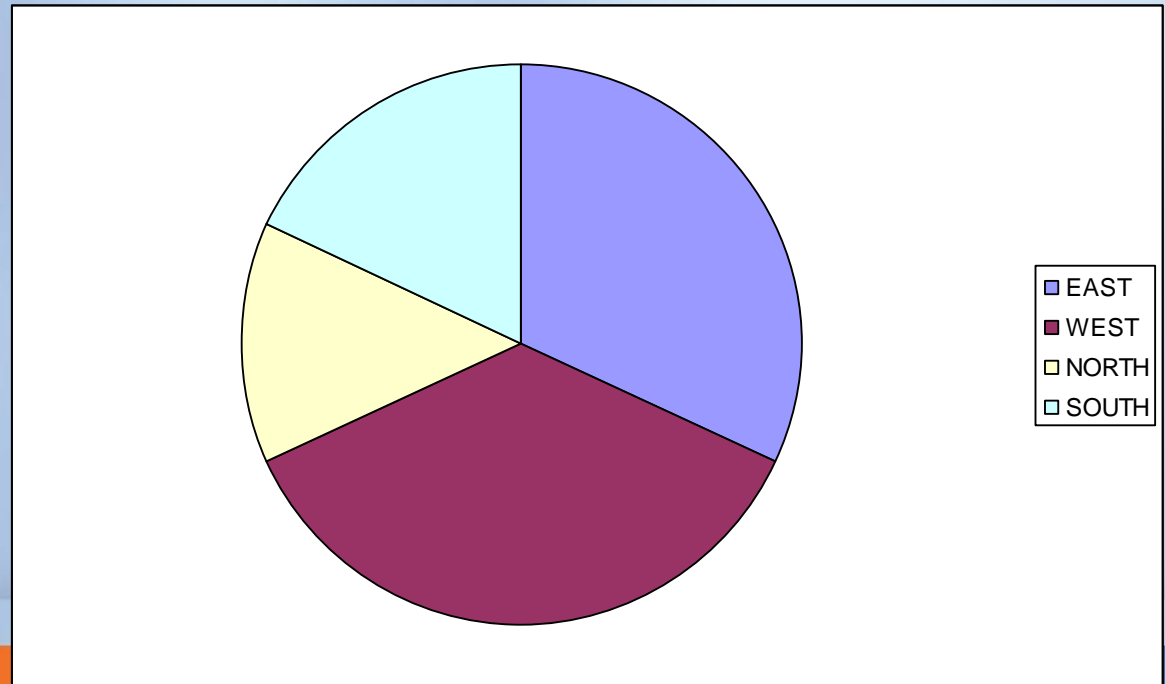
# TASKS OF SPECIALISTS IN OCCUPATIONAL MEDICINE IN EUROPE



*Mari Cruz Rodriguez - Jareño, Martin Kurent, Davor Romih,  
Alenka Škerjanc*

*on behalf of  
UEMS Section of Occupational medicine*

# 1. Participating countries



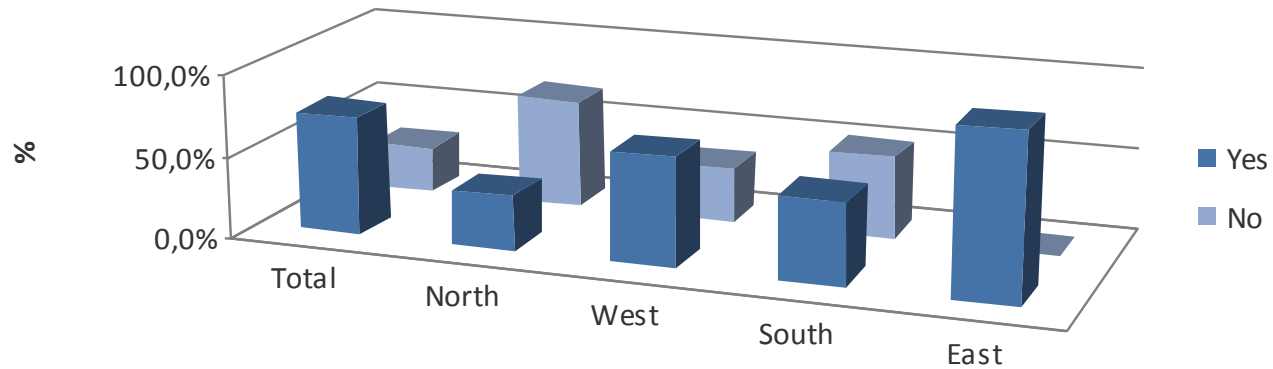
EAST (Czech Republik, Slovakia, Romania, Latvia, Estonia, Slovenia, Croatia)

WEST (United Kingdom, Ireland, France, Belgium, The Netherlands, Luxemburg, Germany, Austria)

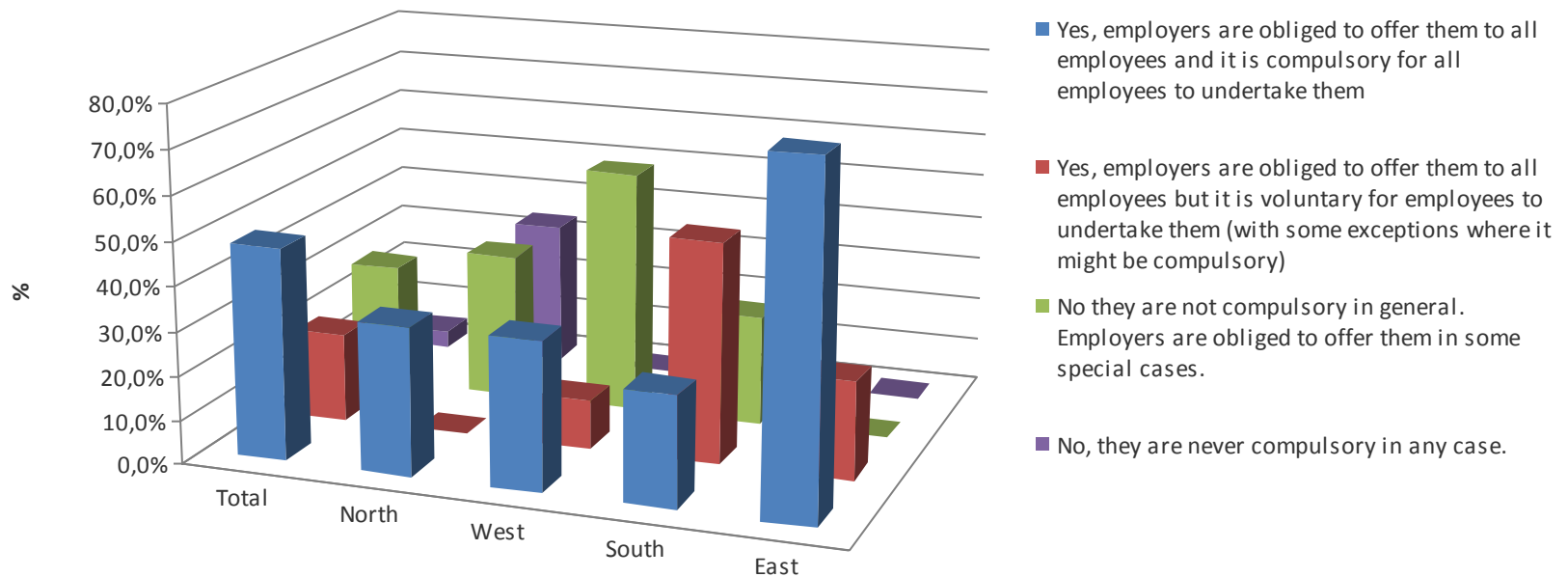
NORTH (Norway, Denmark, Finland)

SOUTH (Spain, Portugal, Italy, Greece)

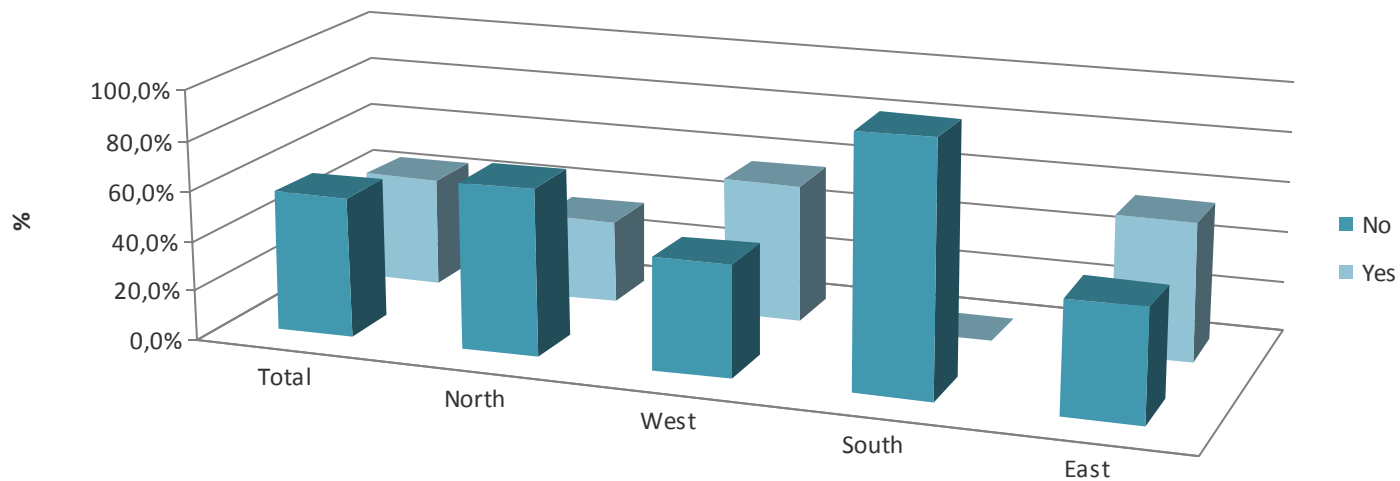
## 2. Is it compulsory for all employers in your country to provide occupational medicine coverage for all employees?



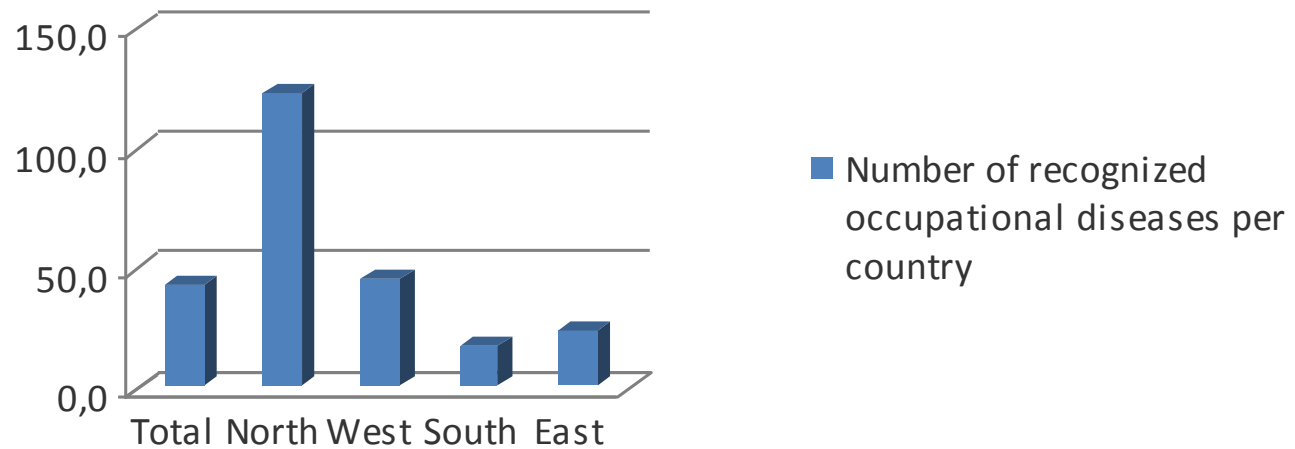
### 3. Are preventive health examinations compulsory in your country?



#### 4. Are there any data in your country on the number of preventive health examinations performed per year in Occupational Health and Safety Services?



## 5. Number of recognized occupational diseases / 100.000 popul.



## 6.a Three most relevant tasks\* of the "average Occupational physician"

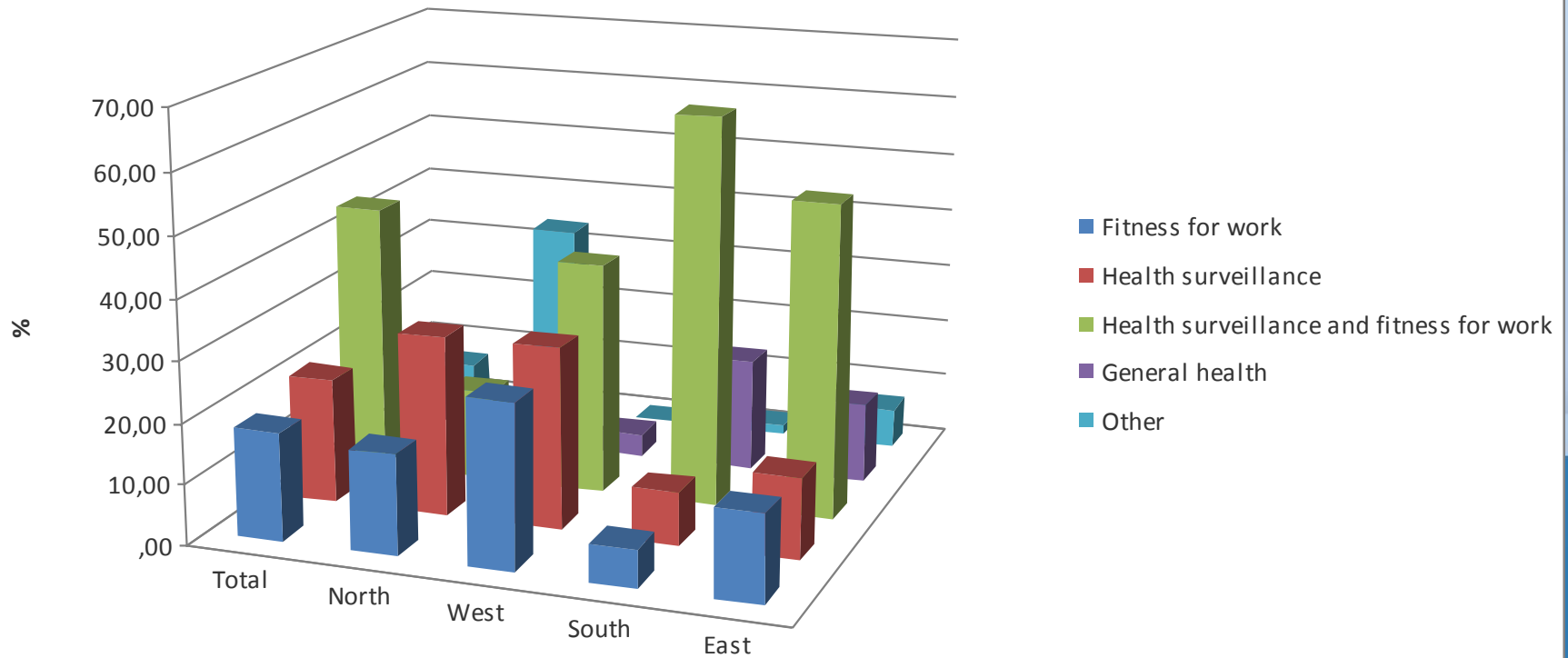
	1st	2nd	3rd
<b>Total</b>	Health Surveillance	Workplace risk assessments	Fitness for work and workplace adaptation
<b>North</b>	Workplace risk assessments	Sickness absence assessment / management	Health Surveillance Fitness for work and workplace adaptation
<b>West</b>	Health Surveillance	Fitness for work and workplace adaptation	Advising on OH, safety, hygiene, ergonomics and protective equipments Workplace assessments of the risks from health hazards
<b>South</b>	Health Surveillance Workplace risk assessments	Health care for non work related problems (similar to GP) Fitness for work and workplace adaptation Advising on OH, safety, hygiene, ergonomics and protective equipments	
<b>East</b>	Health Surveillance	Fitness for work and workplace adaptation	Workplace risk assessments

## 6.b Three tasks that should be most relevant

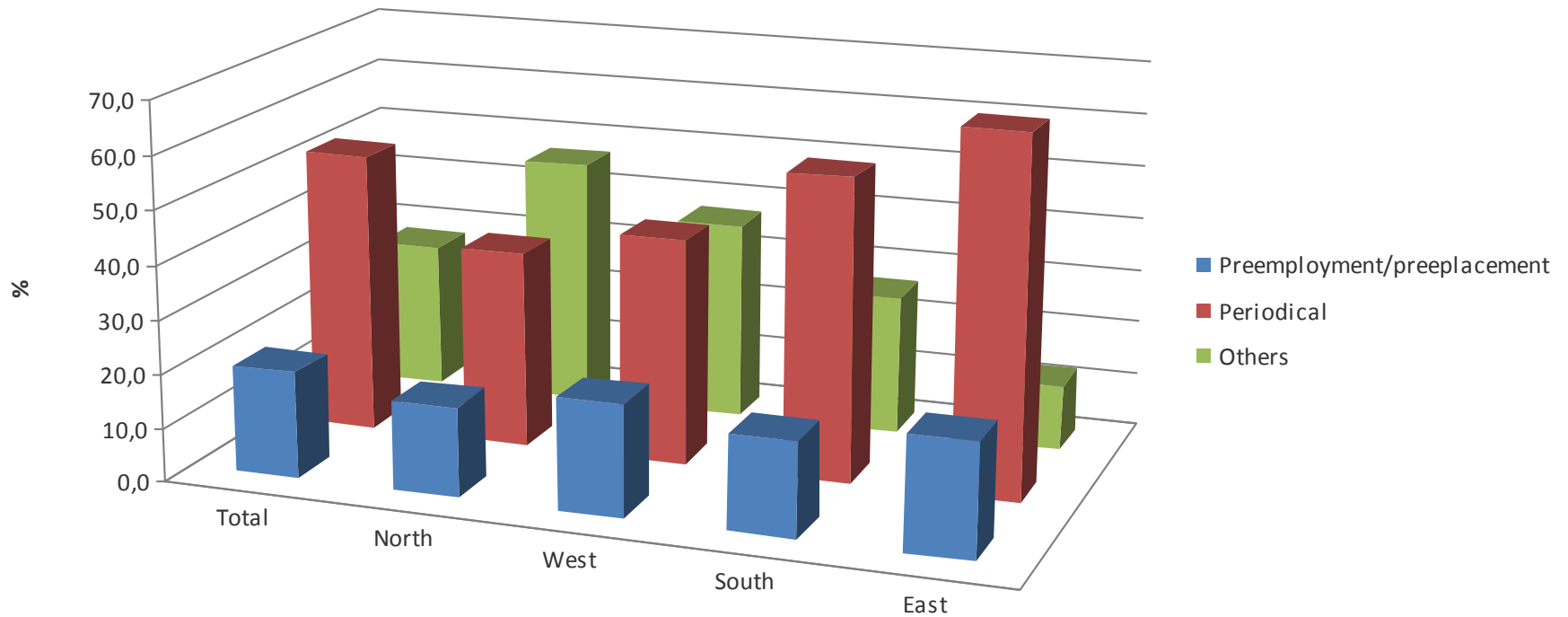
	1st	2nd	3rd
<b>Total</b>	Workplace risk assessments	Health surveillance	Fitness for work and workplace adaptation
		Organising first aid and emergency treatment	
	Workplace risk assessments	Health surveillance	
		Fitness for work workplace adaptation	
<b>North</b>		Advising on OH, safety, hygiene, ergonomics and protective equipments	
	Fitness for work and workplace adaptation	Workplace risk assessments	Sickness absence assessment / management
<b>West</b>			Advising on organization and planning of work; health promotion
	Health surveillance	Workplace risks assessments of the risks from health hazards	
<b>South</b>		Advising on OH, safety, hygiene, ergonomics and protective equipments	
<b>East</b>	Health surveillance	Workplace risk assessments	Fitness for work and workplace adaptation



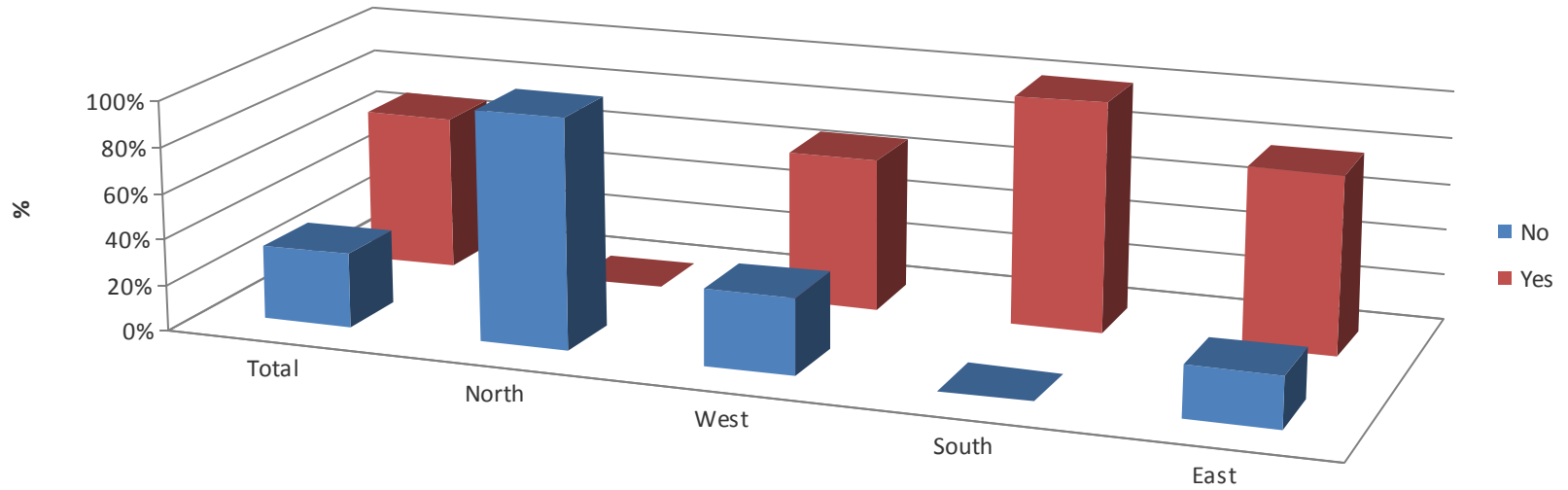
## 7. Context in which preventive health examinations are mostly performed



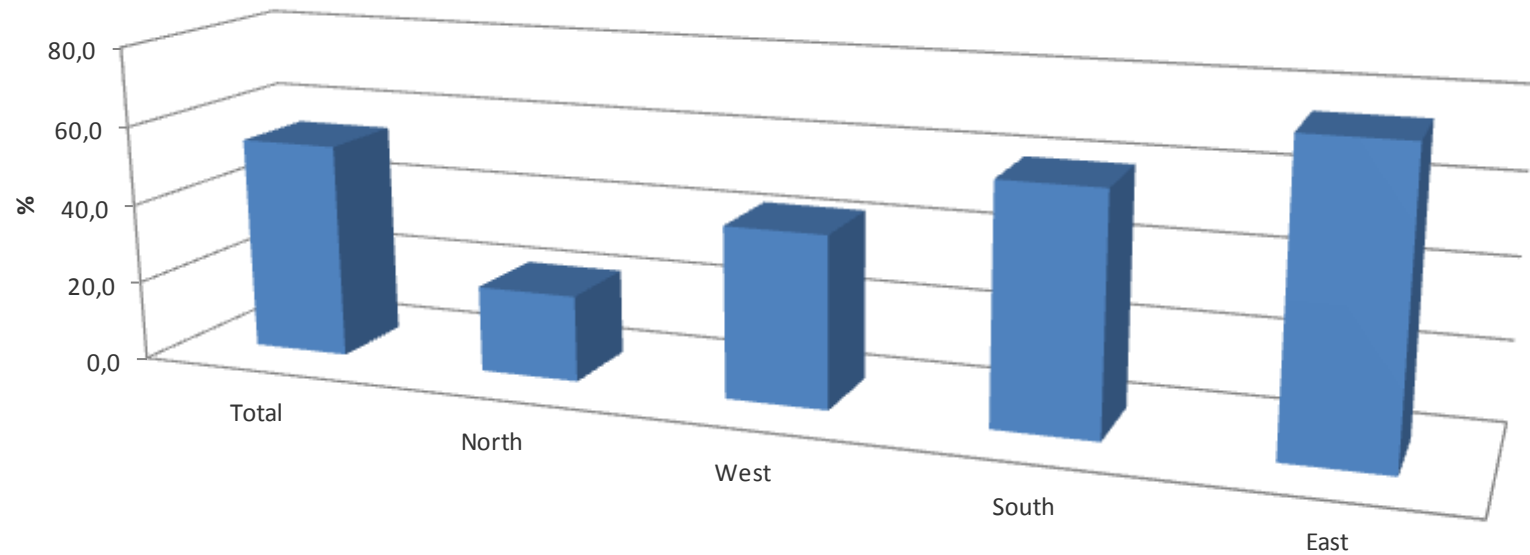
## 8. Type of most frequently performed preventive health examination



## 9. Is a certificate issued after each exam?



**10. What percentage of working time does the "average specialist in occupational medicine/mccupational physician" dedicate to perform preventive health examinations**



THANK YOU FOR YOUR ATTENTION

