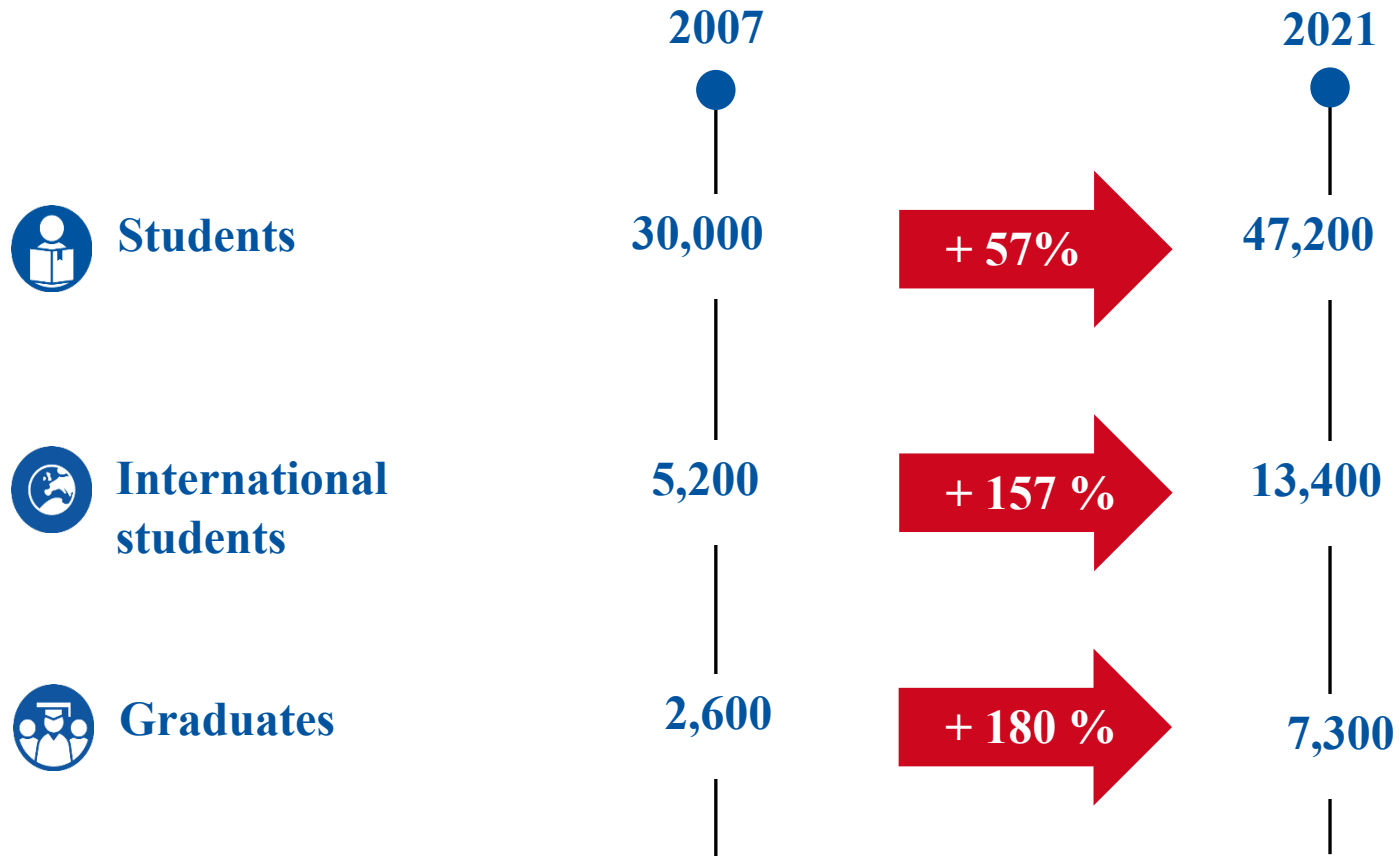




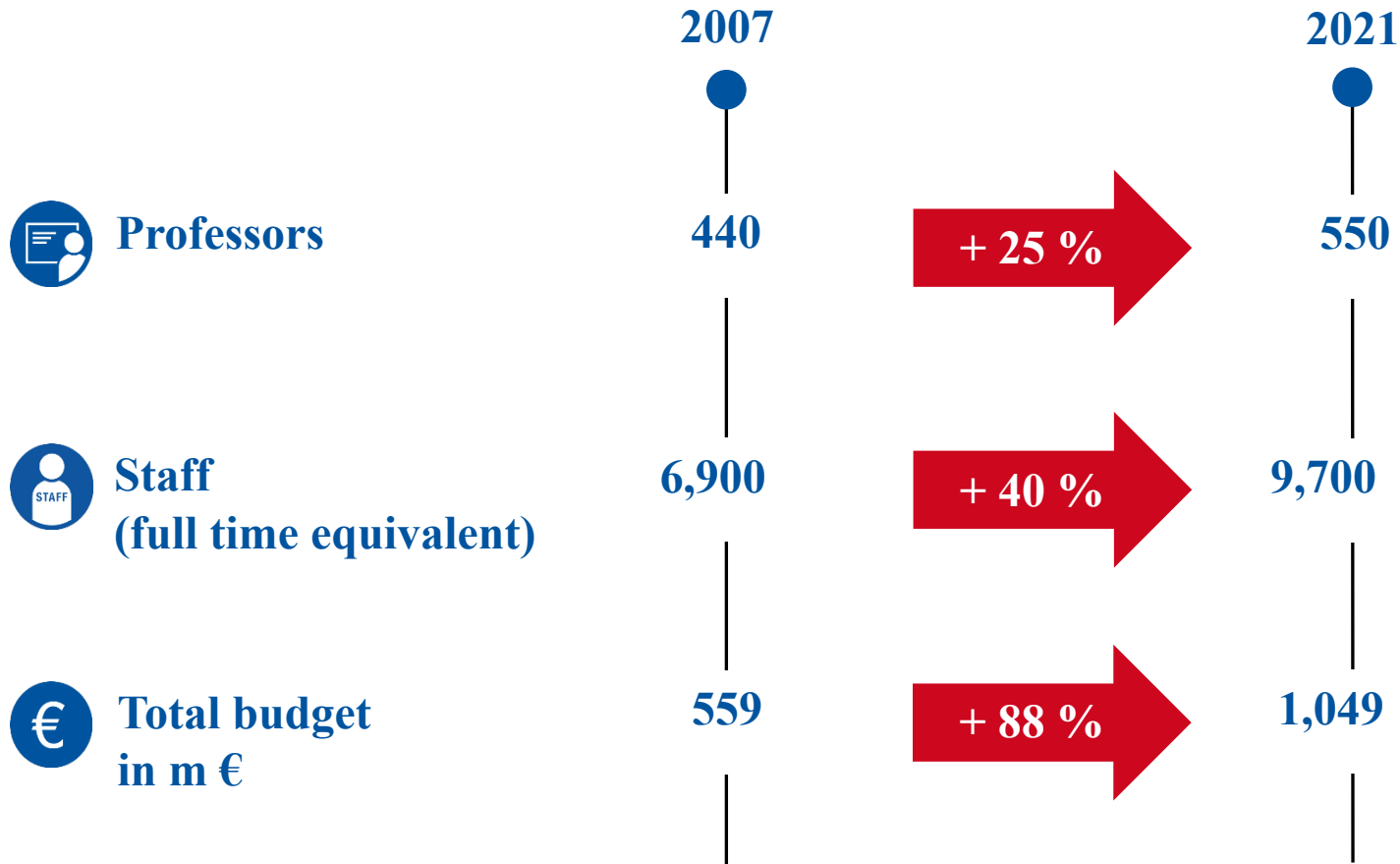
The RWTH in figures - 2021



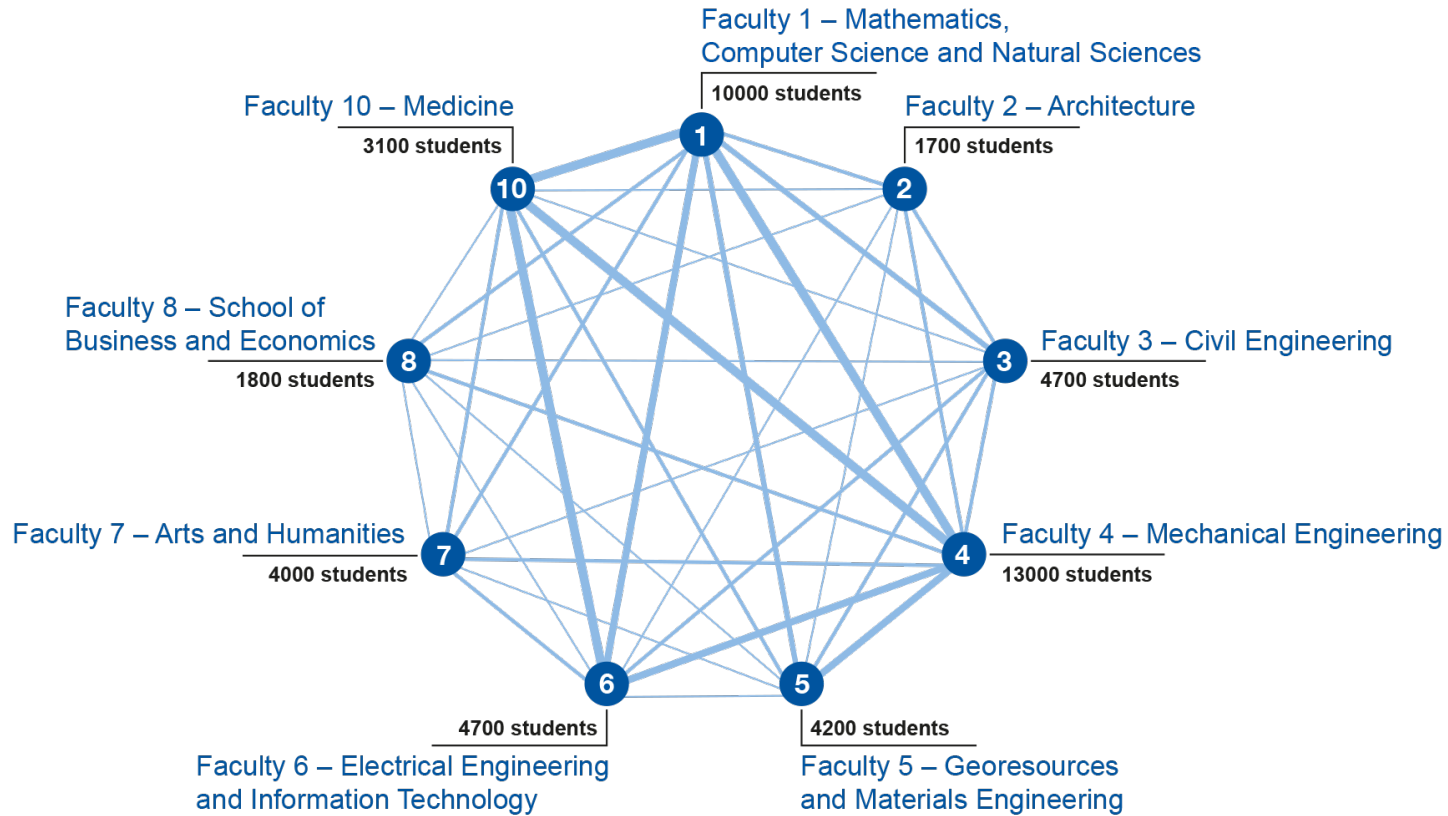
RWTH Facts and Figures



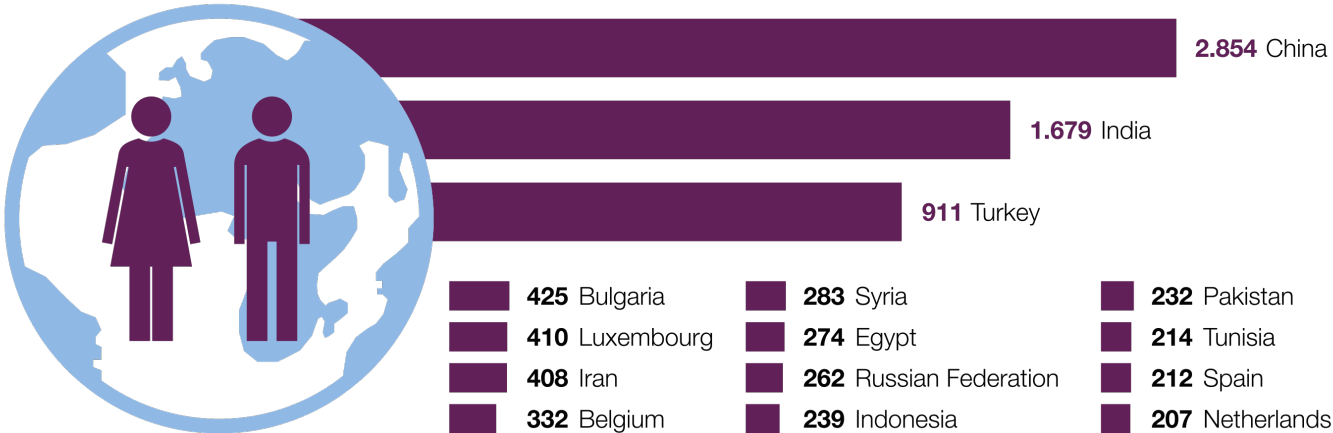
RWTH Facts and Figures



RWTH Facts and Figures

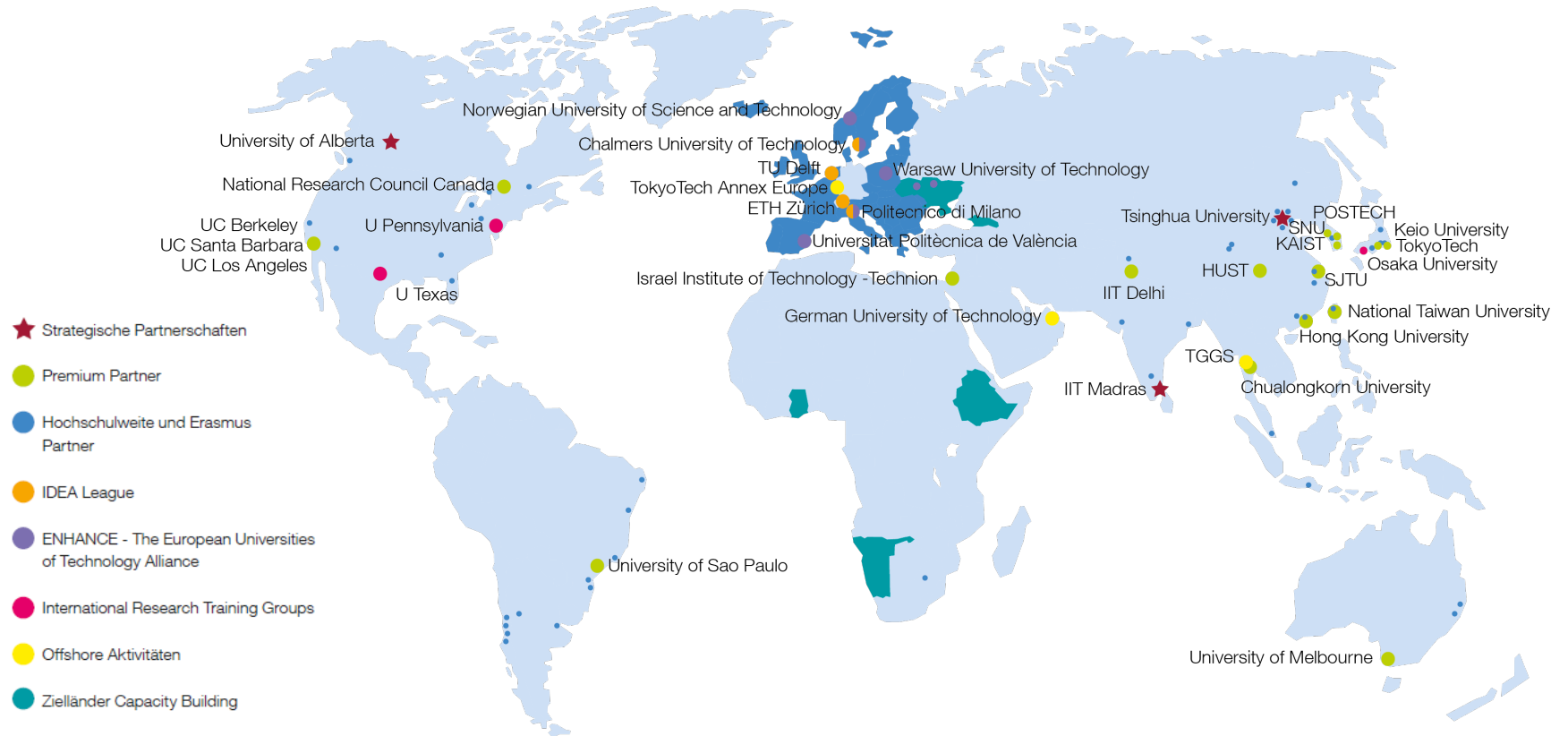


RWTH Facts and Figures

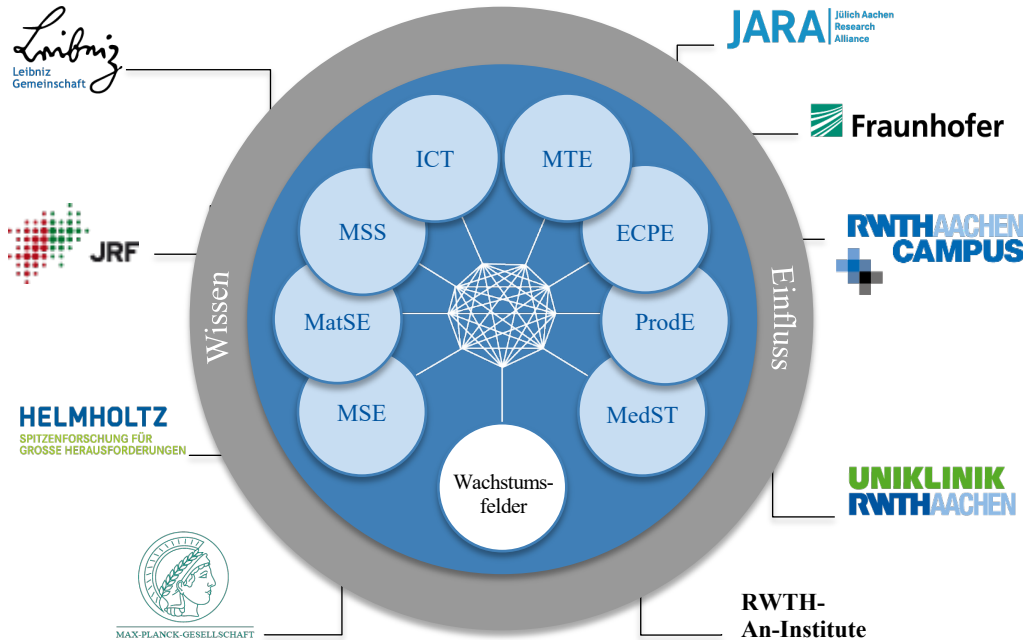


**International students in 2020:
top 15 countries**

Strategic Partnerships and Networks



The research network landscape of RWTH Aachen University



Profile Areas at RWTH:

- Molecular Science & Engineering (MSE)
- Materials Science & Engineering (MatSE)
- Modeling & Simulation Science (MSS, vormalig CompSE)
- Information & Communication Technology (ICT)
- Mobility & Transport Engineering (MTE)
- Energy, Chemical & Process Engineering (ECPE)
- Production Engineering (ProdE)
- Medical Science & Technology (MedST)
- Built and Lived Environment (BLE)

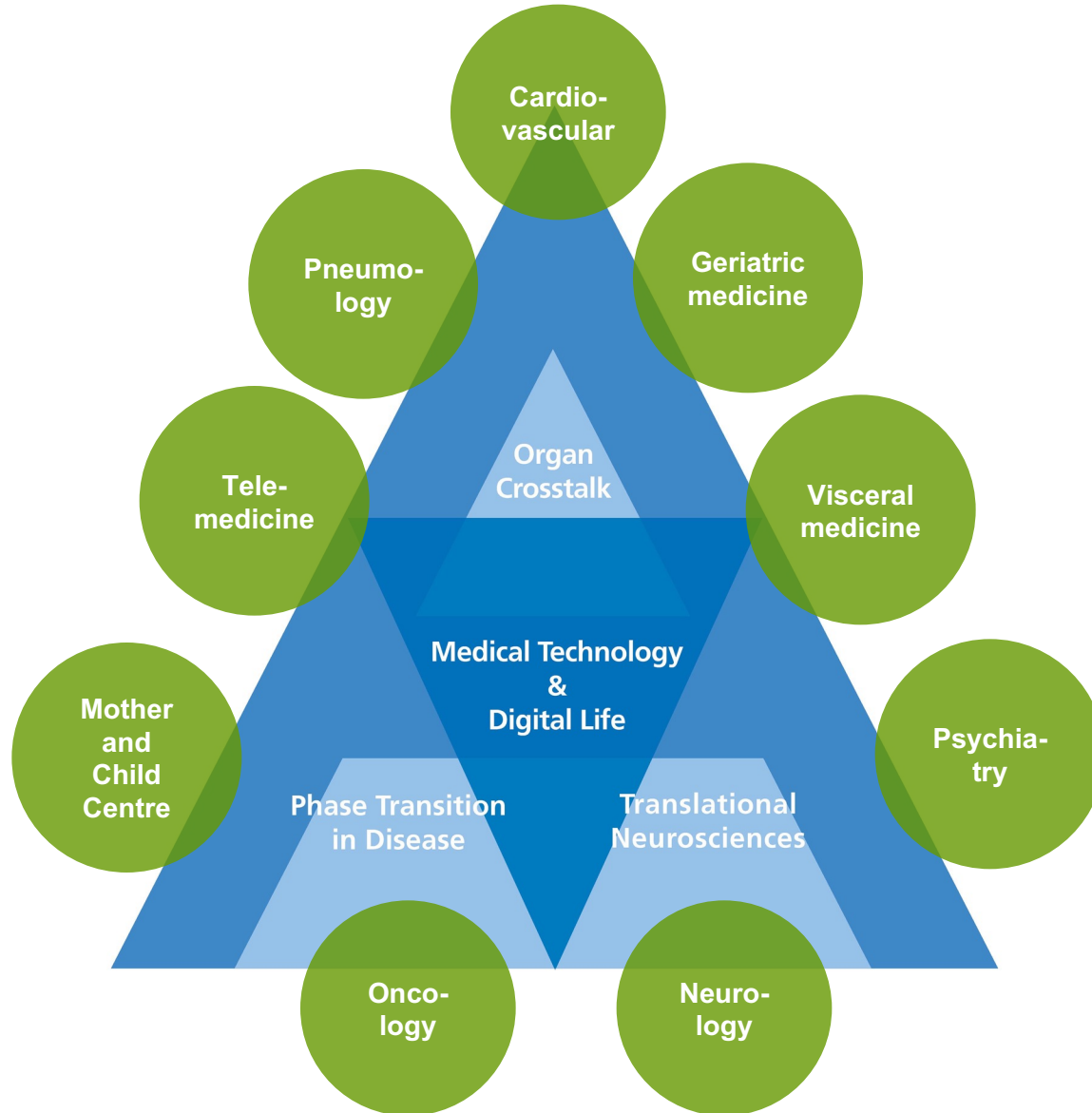


University Hospital RWTH Aachen

Supra-maximum-care hospital

- Biggest hospital building in Europe
- Start of construction in 1971 – Opening in 1985
- Facts:
 - Area size: 27 hectare (or: 25 football pitches)
 - Length x width: 240 m x 130 m
 - Usable area: 222 000 m²
 - 6.600 rooms on 13 floors

Research and care interests



State-of-the-art medicine

- Teaching, Research and patient care under one roof
- 36 specialised clinics, 33 institutes, six interdisciplinary units
- 38 subject and research areas
- Centres: CIO, IZDM, INZA, trauma centre, spine centre, transplantation centre, Centre for Rare Diseases etc.
- 1 400 beds



Key figures 2020

- Outpatient cases in total: 187 390
- Inpatient cases in total : 46 784

Employees:	full-time	(heads)
• Medical service	1 042	(1 197)
• Nursing care / medical function	1 941	(2 517)
• Administration	562	(662)
• Full-time staff in total	6 773	(8 469)



Future Doctors

- 126 professors educate tomorrow's doctors (status as of 2020)
- Over 3,000 students at the medical faculty
- Pioneer of the Medicine Model Course of Study
- AIXTRA - Skillslab (*Aachener interdisziplinäres Trainingszentrum für medizinische Ausbildung*)
- AIXTRA Dental (dental simulation training)



Performance

- **Third-party funding** expenditure increased sixfold since 2000; today: **€ 50 million**
- The **number of publications** that are listed in the most important databases *Web of Science* and *PubMed* has increased from 1 388 in 2010 to more than **1 825** per year by now. Furthermore the quality of work, according to their unweighted impact factor, has increased from 5 334 in 2010 up to 8 613 in 2020.

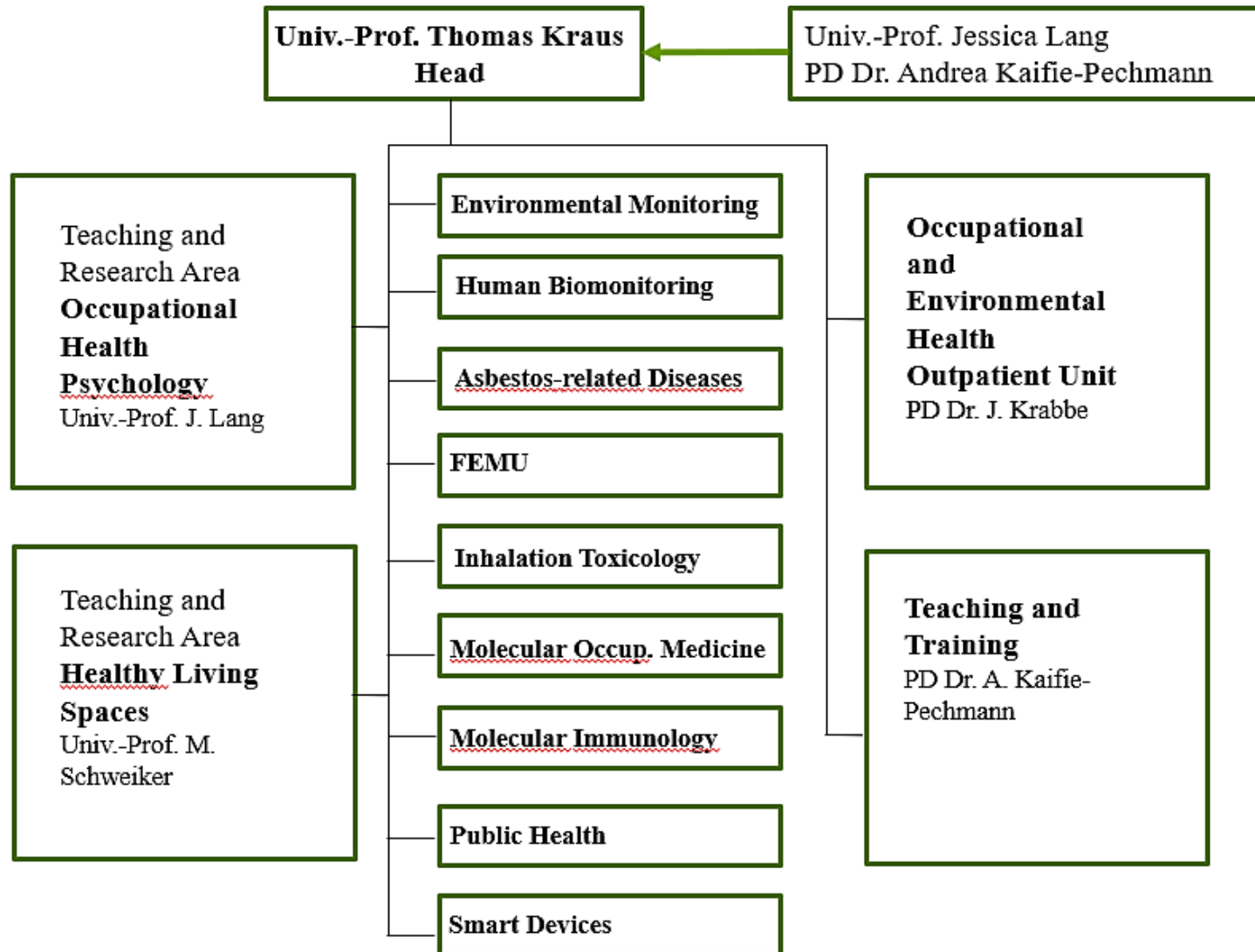


JOURNAL OF
CLINICAL
ONCOLOGY

THE LANCET

Institute for Occupational, Social, and Environmental Medicine





Research

Projects:

- Cohort studies
- Exposure studies
- Basic research
- Systematic reviews



Publications:

- > 40 publications in 2021

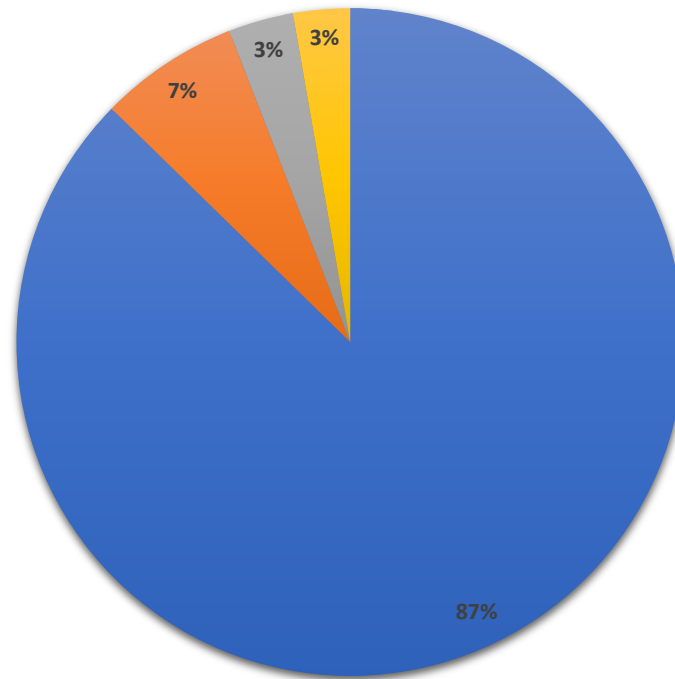
Funding:

- DFG
- BMBF
- EIT Health
- Berufsgenossenschaften
- ...



Outpatient care

n = 3257



■ Occupational Medicine ■ Appraisal Reports ■ Clinical Trials ■ Other



Teaching and Training

- Occupational, Social, and Environmental Medicine
- Public Health
- Health Promotion and Prevention

- + Medical Dentistry
- + Physiotherapists
- + Psychology
- + Architecture
- + Ecotoxicology
-



Thank you!

PD Dr. Andrea Kaifie-Pechmann
+49 241 8035345
akaifie@ukaachen.de